

15  
DETROIT  
ELECTRIC



1917





15

## Price List of 1917 Detroit Electric Cars

(Prices subject to change without notice)

### Model 62 Cabriolet

With Detroit Electric Guaranteed Lead Battery . . . . \$2,175

### Model 63 Rear Drive Four-Passenger Brougham

With Detroit Electric Guaranteed Lead Battery . . . . \$2,275

### Model 64 Forward Drive Five-Passenger Brougham

With Detroit Electric Guaranteed Lead Battery . . . . \$2,350

### Model 65 Rear Drive Five-Passenger Brougham

With Detroit Electric Guaranteed Lead Battery . . . . \$2,325

### Model 66 Duplex Drive Five-Passenger Brougham

With Detroit Electric Guaranteed Lead Battery . . . . \$2,375

### Model 68 Rear Drive Four-Passenger Brougham

With Detroit Electric Guaranteed Lead Battery . . . . \$1,775

*Houk wire or wood wheels, Goodrich Silvertown cord pneumatic or cushion tires optional on all models except Model 68. Houk wire wheels and Goodrich Silvertown cord pneumatic tires only on this model.*

ALL PRICES F. O. B. DETROIT

*All printed literature and illustrations describing our products are subject to such changes as the necessities of manufacturing and mechanical construction may require us to add*

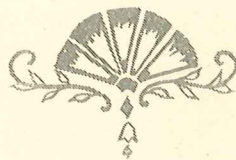
THE ANDERSON ELECTRIC CO.

Makers of Detroit Electric Cars

Detroit, Mich.



THE  
*Detroit*  
ELECTRIC



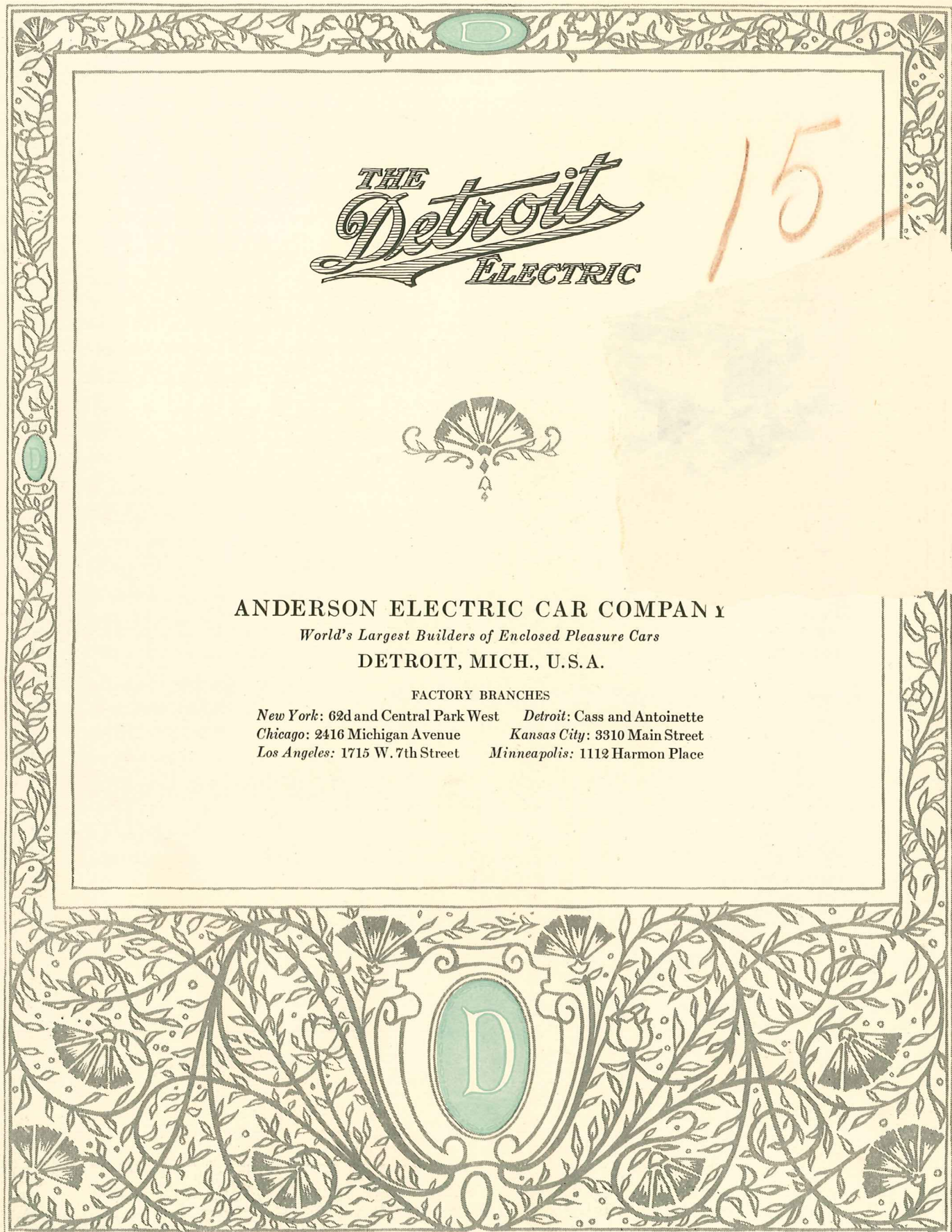
ANDERSON ELECTRIC CAR COMPANY

*World's Largest Builders of Enclosed Pleasure Cars*

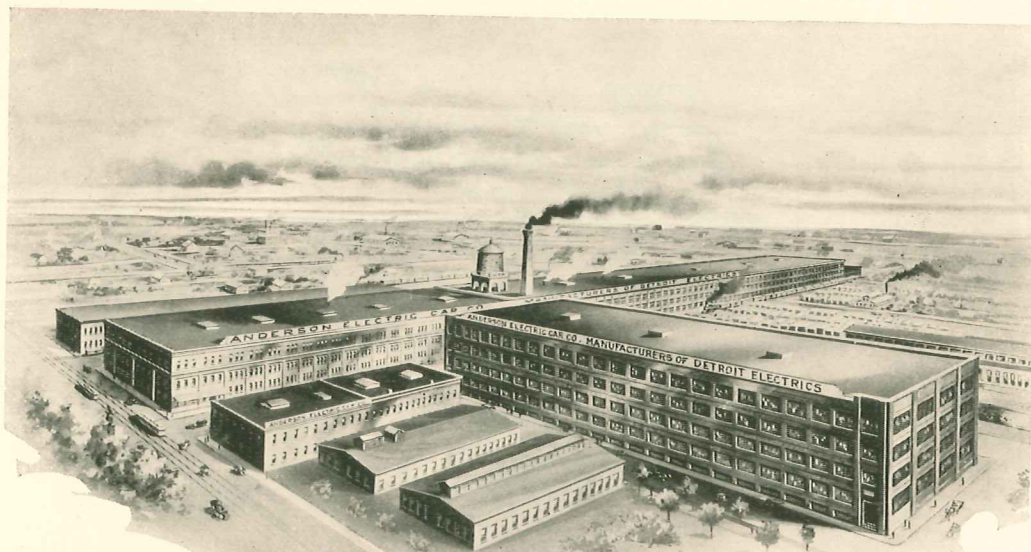
DETROIT, MICH., U.S.A.

FACTORY BRANCHES

New York: 62d and Central Park West	Detroit: Cass and Antoinette
Chicago: 2416 Michigan Avenue	Kansas City: 3310 Main Street
Los Angeles: 1715 W. 7th Street	Minneapolis: 1112 Harmon Place







*The factories of the Anderson Electric Car Company at Detroit and Cleveland, where Detroit Electric Cars are manufactured, are the largest plants in the world devoted exclusively to the manufacture of electric cars. They cover a combined floor space of twenty acres.*





## THE DETROIT ELECTRIC

DURING the past three years greater developments in electric car construction have been accomplished than in any previous decade. Necessity often mothers invention, and so it has been in the automobile industry. The insistent, persistent demand from the public for an automobile possessing the distinct, inherent advantages of the electric-powered car, together with sufficient speed and mileage per charge, has resulted in the production of the present Detroit Electric—a modern electric-powered, all-year car.

It meets successfully every requirement of the modern motorist and his family throughout the entire year. There is no better evidence that the Detroit Electric is the all-year car long sought by automobile buyers than the fact that more than 140 per cent increase in sales was recorded during the twelve-month period just past.

When the business man and experienced motorist considers the fact that the modern Detroit Electric will meet 98 per cent of his daily requirements, at a power cost of from \$5.00 to \$7.00 per month; when he considers its remarkable adaptability for all seasons of the year, its flexibility, its acceleration, its safety, and its beauty in line and appointment, he can come to no other conclusion than that the Detroit Electric is the best investment among all-year automobiles.

The various models offered for 1917 are outlined in the following pages.

After you have carefully read the specifications, we strongly recommend that you arrange for an actual road demonstration, since it is only in this way that you can gain fullest appreciation of the real capabilities of the Detroit Electric.

Branches or responsible dealers are located in cities throughout the United States, where service to the Detroit Electric car owner is given the most intelligent and comprehensive consideration. To supplement the branch and dealer service, expert factory mechanics are subject to call at any time to aid in the consideration of any problems pertaining to the Detroit Electric car, or charging apparatus to be erected in either private or public garages.

ANDERSON ELECTRIC CAR COMPANY  
DETROIT, MICHIGAN





*Three-Passenger Cabriolet Model 62*

The Detroit Electric Cabriolet model is specially designed to meet the requirements of the professional or business man who must have a thoroughly reliable car at his command both winter and summer.

*For price see schedule inserted at back of catalogue*



## 1917 Specifications

# Three-Passenger Cabriolet Model 62

**Convertible Body** The Cabriolet is so designed that in inclement weather the top may be raised, completely protecting occupants against rain or snow; while in pleasant weather the top may be lowered, offering all the pleasures of an open roadster. All panels and battery hoods are of sheet aluminum and the top is of the finest grade leather.

**Interior Arrangement** This car seats three people comfortably on the wide rear seat and one on the auxiliary front seat.

**Dimensions** Rear seat—width 50 inches, depth 18 inches. Front to rear window 53 inches. Top of cushion to roof 40 inches. Door width 24 inches. Measurements over all—height 88 inches, width 67 inches, total length 11 feet 10 inches.

**Upholstery** This model is beautifully upholstered in superfine broadcloth or hand-buffed leather in blue or green shades. Exclusive whipcords and bedfords are also offered. Turkish type of upholstery is used throughout. Cushions are deep and comfortable, tufted with genuine curled hair.

**Painting** Detroit Electric special "Green grey," Royal blue or Brewster green are the color options offered.

**Tread** 56 inches (Standard).

**Battery** Our guaranteed battery—42 cells—15 plate—used in this car is of our own exclusive design and insures the greatest capacity per unit of weight.

**Axles** Designed and manufactured in our own shops, the Detroit Electric full floating rear axle is equipped with the worm bevel type of driving gears. The front axle is a drop forging of the I-beam type.

**Wheel Base** The long wheel base, 100 inches, combined with the long, resilient springs, assures splendid riding qualities.

**Operating Levers** Operating levers are mounted on the side of the car in horizontal position one above the other. The longer (steering) lever is operated by the right hand and the shorter (controller) lever by the left. When the driver leaves the car these levers may be turned up out of the way and locked, preventing use of the car without the owner's knowledge.

**Brakes** Two separate sets of brakes are provided, operating independently. The brakes on the rear hubs are of the internal expanding type, 16 x 2½ inches, and are operated by foot pedal. To the left of brake foot pedal is a small pedal, pressure on which locks the hub brakes and automatically cuts off the power. The second brake operates on the motor and is applied by a slight backward movement of the controller lever.

**Tires** Standard equipment consists of Goodrich Silvertown cord pneumatic, size 34 x 4½. Cushion tires 36 x 4½ inches.

**Fenders** Fenders are of the oval crown design and are skirted to the body so as to completely protect it against splash or mud.

**Speeds** Five speeds are at your command, ranging from 6 to 23 miles per hour.

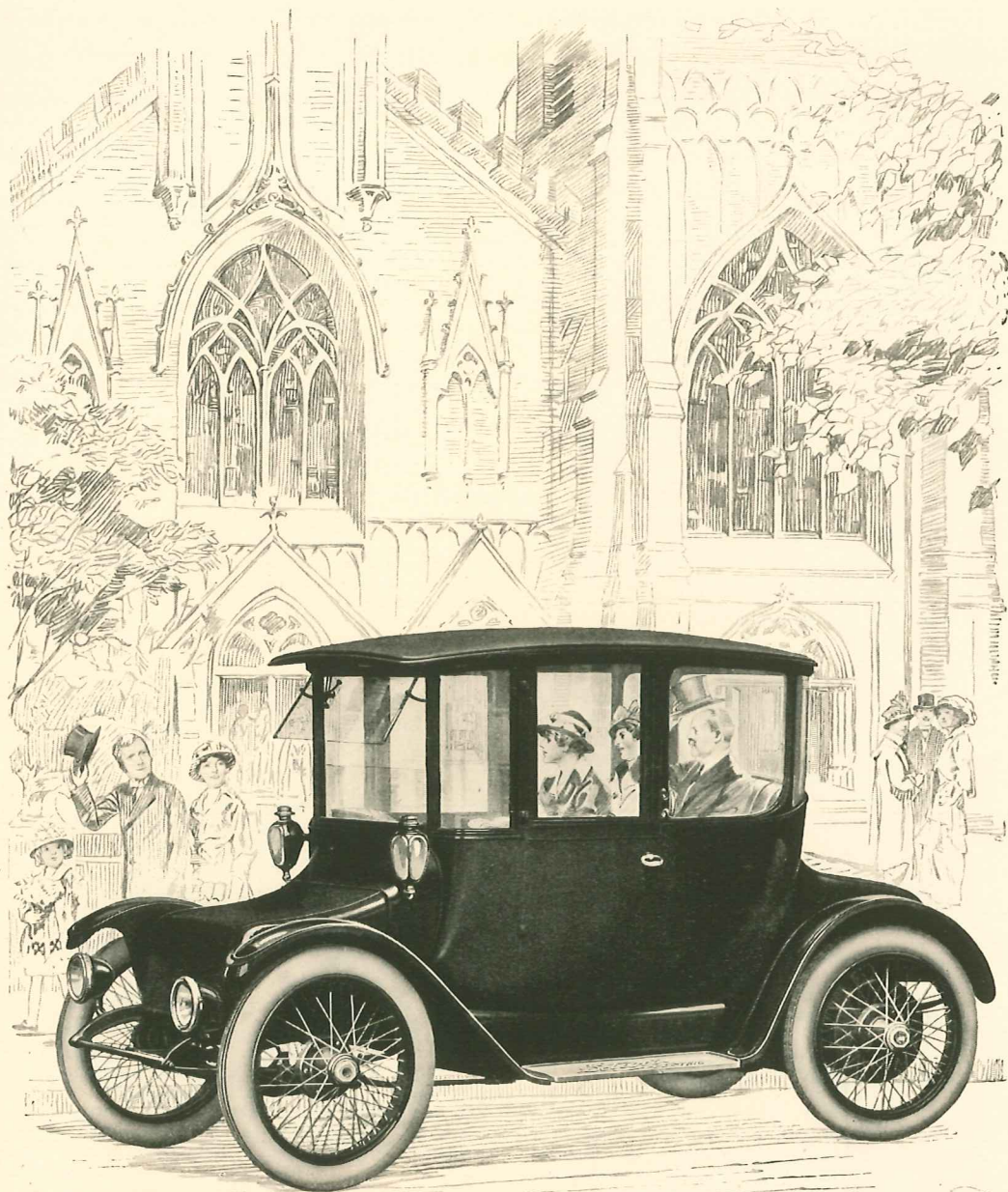
**Mileage** Owing to the large battery capacity and high mechanical efficiency of the Detroit Electric, extra long mileage is assured. You can feel sure that your car will go as far on one charge as your daily requirements demand. Mileage per charge conservatively ranges from 65 to 100 miles.

**Equipment** All the necessary equipment is furnished as standard, including headlights, body lamps, tail lamp, Klaxette horn, hub odometer, eight-day clock, meter, smoking set and complete equipment of tools.

*Houk wire wheels are standard equipment on all models.*



D



*Four-Passenger Brougham Model 63*

Conservative elegance and practicability are particularly emphasized in Detroit Electric appearance and performance.

*For price see schedule inserted at back of catalogue.*



1917 Specifications

## Four-Passenger Brougham Model 63

Rear Drive

**Body Features** All portions of body exposed to the weather such as panels, battery hoods, moldings, window frames (front and rear), and roof, are of aluminum. The roof, pressed out of a single sheet, will not leak nor crack. Sashless plate glass door windows are easily opened or shut by turning a revolving lever. Rain drip protectors over the tops of the doors are provided.

**Interior Arrangement** This model comfortably seats four people, three on the wide rear seat and one on the revolving Pullman chair in the front right corner. An upholstered package box in the front left corner can be used as an extra seat if desired.

**Dimensions** Rear seat—width 52 inches, depth 18 inches. Front to rear window 66 inches. Top of cushion to roof 40 inches. Door width 23 inches. Measurements over all—height 88 inches, width 67 inches, total length 11 feet 10 inches.

**Upholstery** Superfine broadcloth, hand-buffed leather in blue or green shades, or exclusive bedfords and whipcords are the choices offered in the upholstery of this model. Turkish style of deep upholstery is used throughout. Cushions are thickly padded with genuine curled hair. Top is trimmed in plain broadcloth.

**Painting** Detroit Electric special "Green grey," Royal blue or Brewster green are the color options offered.

**Tread** 56 inches (Standard).

**Axles** Designed and manufactured in our own shops, the Detroit Electric full floating rear axle is equipped with the worm bevel type of driving gears. The front axle is a drop forging of the I-beam type.

**Battery** Our guaranteed battery—42 cells, 15 plate—used in this car is of our own exclusive design, and insures the greatest capacity per unit of weight.

**Operating Levers** Operating levers are mounted at the side of the rear seat in parallel position, one above the other. The longer (steering) lever is operated by the right hand, and the shorter (controller) lever by the left. When the driver leaves the car, these levers may be turned up out of the way and locked, preventing theft of car.

**Brakes** Two separate sets of brakes are provided, operating independently. The brakes on the rear hubs are of the internal expanding type, 16 x 2½ inches, and are operated by foot pedal. To the left of brake foot pedal is a small pedal, pressure on which locks the hub brakes and automatically cuts off the power. The second brake operates on the motor and is applied by a slight backward movement of the controller lever.

**Wheel Base** The 100-inch wheel base, combined with long, resilient springs, insures utmost riding comfort.

**Tires** Standard equipment consists of Goodrich Silvertown cord pneumatic, size 34 x 4½. Cushion tires 36 x 4½ inches.

**Fenders** Fenders are of the oval crown design, and are skirted to the body so as to completely protect it against splash or mud.

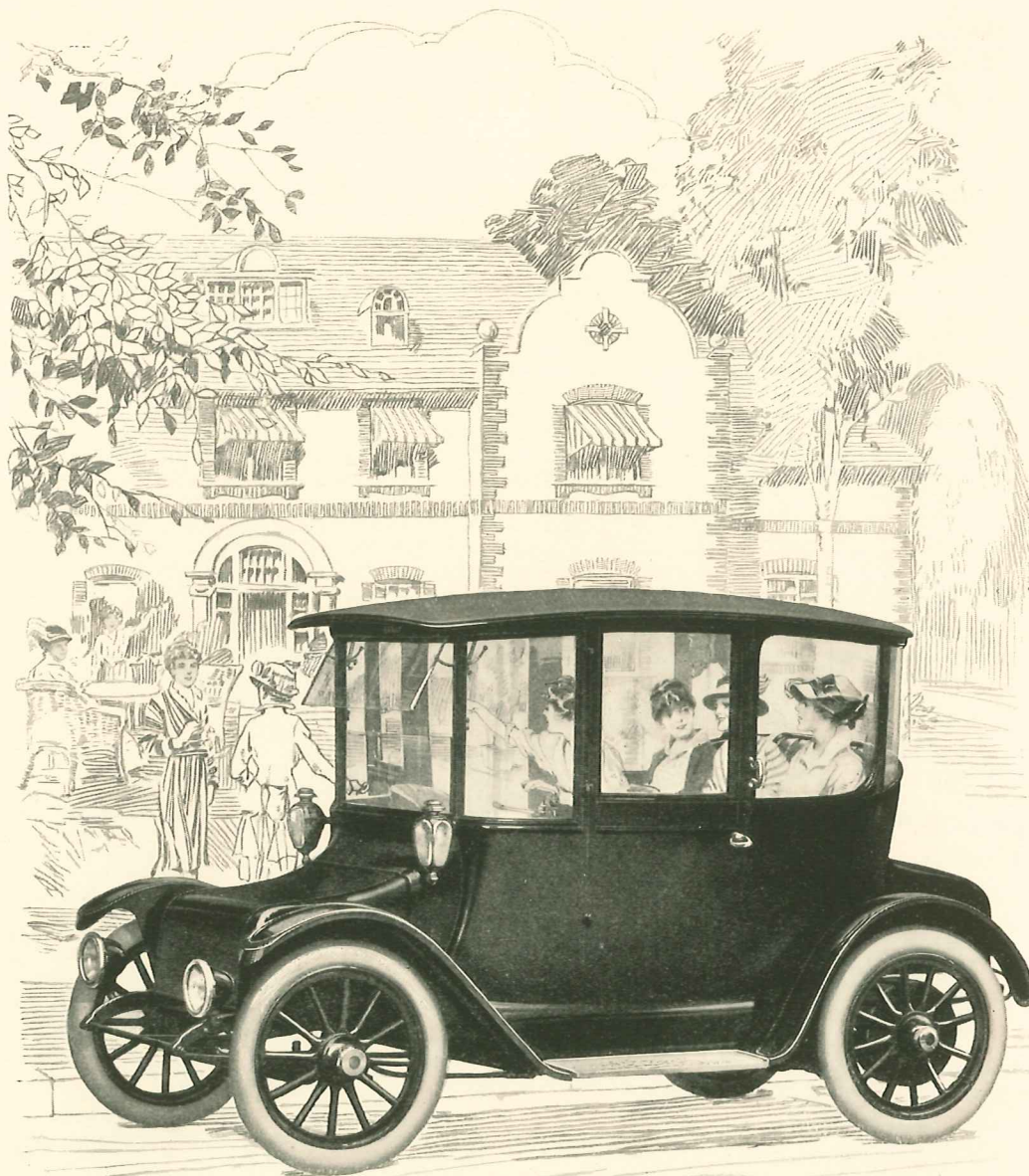
**Speeds** Five speeds are at your command ranging from 6 to 23 miles per hour.

**Mileage** Owing to the large battery capacity and high mechanical efficiency of the Detroit Electric, extra large mileage is assured. You can be sure that your car will go as far on one charge as your daily requirements demand. Mileage per charge conservatively ranges from 65 to 100 miles.

**Equipment** The equipment consists of head-lights, body lamps, two sunburst interior lights, tail lamp, Klaxette horn, meter, hub odometer, eight-day clock, Hanlon patented rain-vision front window, toilet set, and complete equipment of tools.

*Houk wire wheels are standard equipment on all models.*





*Five-Passenger Brougham Model 64*

Winter as well as summer the roomy 5-passenger Detroit Electric Brougham is always ready to meet every requirement of the family for social duties or shopping.

*For price see schedule inserted at back of catalogue.*



## 1917 Specifications

# Five-Passenger Brougham Model 64

Front Drive

**Body Features** All portions of the body exposed to the weather, such as panels, battery hoods, moldings, window frames (front and rear), and roof are of aluminum. The roof, pressed out of a single sheet, will not leak nor crack. Sashless plate glass door windows are easily opened or shut by turning a handle. Rain drip protectors over the tops of the doors are provided.

**Interior Arrangement** Comfortable seating arrangements for five passengers are provided, three on the roomy rear seat and two on the revolving Pullman chairs in front. Special attention has been given to the arrangement of seats so that easy entrance or exit may be effected without interference with other passengers.

**Dimensions** Rear seat—width 52 inches, depth 16 inches. Front to rear window 74 inches. Top of cushion to roof 40 inches. Width of doors 24½ inches. Measurements over all—height 88 inches, width 67 inches, total length 11 feet 10 inches.

**Upholstery** This model is beautifully upholstered in superfine broadcloth or hand-buffed leather in blue or green shades. Exclusive whipcords and bedfords are also offered. Turkish type of upholstery is used throughout. Cushions are deep and comfortable, and are padded with genuine curled hair. Top is trimmed in plain broadcloth.

**Painting** Detroit Electric special "Greengrey," Royal blue or Brewster green are the color options offered.

**Tread** 56 inches (Standard).

**Axles** Designed and manufactured in our own shops, the Detroit Electric full floating rear axle is equipped with the worm bevel type of driving gears. The front axle is a drop forging of the I-beam type.

**Battery** Our guaranteed battery—42 cells, 15 plate—used in this car, is of our own exclusive design and insures the greatest capacity per unit of weight.

**Operating Levers** This car is operated exclusively from the front Pullman chair. Operating levers are mounted at the side of the car—in parallel position, one above the other. The longer (steering) lever is operated by the right hand and the shorter (controller) lever by the left. When the driver leaves the car these levers may be turned up out of the way and locked, preventing theft of car.

**Brakes** Two separate sets of brakes are provided, operating independently. The brakes on the rear hubs are of the internal expanding type, 16 x 2½ inches and are operated by foot pedal. To the left of brake foot pedal is a small pedal, pressure on which locks the hub brakes and automatically cuts off the power. The second brake operates on the motor and is applied by a slight backward movement of the controller lever.

**Wheel Base** The long wheel base, 100 inches, combined with long, resilient springs, assures splendid riding qualities.

**Tires** Standard equipment consists of Goodrich Silvertown cord pneumatic, size 34 x 4½ inches. Cushion tires, 36 x 4½ inches.

**Fenders** Fenders are of the oval crown design, and are skirted to the body so as to completely protect it against splash or mud.

**Speeds** Five speeds are at your command, ranging from 6 to 23 miles per hour.

**Mileage** Owing to the large battery capacity and high mechanical efficiency of the Detroit Electric, extra long mileage is assured. You can be sure that your car will go as far on one charge as your daily requirements demand. Mileage per charge conservatively ranges from 65 to 100 miles.

**Equipment** The equipment consists of head lights, body lamps, two sunburst interior lights, tail lamp, Klaxette horn, meter, hub odometer, eight-day clock, Hanlon patented rain-vision front window, toilet set and complete equipment of tools.

*Houk wire wheels are standard equipment on all models.*





*Five-Passenger Brougham Model 65*

The reliability, ease of operation and privacy of the Detroit Electric Model 65, make it the ideal car for ladies desiring to attend evening functions unescorted.

*For price see schedule inserted at back of catalogue.*



## 1917 Specifications

# Five-Passenger Brougham Model 65

Rear Drive

**Body Features** All portions of the body exposed to the weather, such as panels, battery hoods, moldings, window frames (front and rear) and roof are of aluminum. The roof, pressed out of a single sheet, will not leak nor crack. Sashless plate glass door windows are easily opened or shut by turning a handle. Rain drip protectors over the tops of the doors are provided.

**Interior Arrangement** This model comfortably seats five people, three on the wide rear seat, one on the revolving Pullman chair at right front corner, and one on a large upholstered box seat in left front corner.

**Dimensions** Rear seat—width 52 inches, depth 18 inches. Front to rear window 74 inches. Top of cushion to roof 40 inches. Door width 24½ inches. Measurements over all—height 88 inches, width 67 inches, total length 11 feet 10 inches.

**Upholstery** Superfine broadcloth, hand-buffed leather in blue or green shades, or exclusive bedfords and whipcords are the choices offered in the upholstery of this model. Turkish style of deep upholstery is used throughout. Cushions are padded with genuine curled hair. Top is lined with plain broadcloth.

**Painting** Detroit Electric special "Green grey," Royal blue or Brewster green are the color options offered.

**Battery** Our guaranteed battery—42 cells, 15 plate—used in this car is of our own exclusive design and insures the greatest capacity per unit of weight.

**Operating Levers** Operating levers are mounted at the side of the rear seat in parallel position one above the other. The longer (steering) lever is operated by the right hand and the shorter (controller) lever by the left. When the driver leaves the car these levers may be turned up out of the way and locked, preventing theft of car.

**Brakes** Two separate sets of brakes are provided, operating independently. The brakes on the rear hubs are of the internal expanding type, 16 x 2½ inches, and are operated by foot pedal. To the left of brake foot pedal is a small pedal, pressure on which locks the hub brakes and automatically cuts off the power. The second brake operates on the motor and is applied by a slight backward movement of the controller lever.

**Axles** Designed and manufactured in our own shops, the Detroit Electric full floating rear axle is equipped with the worm bevel type of driving gears. The front axle is a drop forging of the I-beam type.

**Wheel Base** The 100-inch wheel base, combined with long, resilient springs, insures utmost riding comfort.

**Tread** 56 inches (Standard).

**Tires** Standard equipment consists of Goodrich Silvertown cord pneumatic, size 34 x 4½. Cushion tires 36 x 4½.

**Fenders** Fenders are of the oval crown design, and are skirted to the body so as to completely protect it against splash or mud.

**Speed** Five speeds are at your command, ranging from 6 to 23 miles per hour.

**Mileage** Owing to the large battery capacity and high mechanical efficiency of the Detroit Electric, extra long mileage is assured. You can be sure that your car will go as far on one charge as your daily requirements demand. Mileage per charge conservatively ranges from 65 to 100 miles.

**Equipment** The equipment consists of head-lights, body lamps, two sunburst interior lights, tail lamp, Klaxette horn, meter, eight-day clock, hub odometer, Hanlon patented rain-vision front window, toilet set, and complete equipment of tools.

*Houk wire wheels are standard equipment on all models.*





*Five-Passenger Brougham Model 66*

The duplex drive model 66 may be driven from either the front or rear seat. Those not caring to drive themselves may occupy the rear seats, while the chauffeur or even the maid may operate the car from the front driver's position.

*For price see schedule inserted at back of catalogue.*



## 1917 Specifications

# Five-Passenger Brougham Model 66

Duplex Drive

**Body Features** All portions of the body exposed to the weather, such as panels, battery hoods, moldings, window frames (front and rear), and roof are aluminum. The roof, pressed out of a single sheet, will not leak nor crack. Sashless plate glass door windows are easily opened or shut by turning a handle. Rain drip protectors over the tops of the doors are provided.

**Interior Arrangement** Comfortable seating arrangements for five passengers are provided, three on the roomy rear seat and two on the revolving Pullman chairs in front. Special attention has been given to the arrangement of seats so that easy entrance or exit may be effected without interference with other passengers.

**Dimensions** Rear seat—width 52 inches, depth 18 inches. Front to rear window 74 inches. Top of cushion to roof 40 inches. Width of doors 24½ inches. Measurements over all—height 88 inches, width 67 inches, total length 11 feet 10 inches.

**Upholstery** This model is beautifully upholstered in superfine broadcloth or hand-buffed leather in blue or green shades. Exclusive whipcords and bedfords are also offered. Turkish type of upholstery is used throughout. Cushions are deep and comfortable and are padded with genuine curled hair. Top is trimmed in plain broadcloth.

**Painting** Detroit Electric special "Green grey," Royal blue or Brewster green are the color options offered.

**Tires** Standard equipment consists of Goodrich Silvertown cord pneumatic, size 34 x 4½. Cushion tires, 36 x 4½.

**Axles** Designed and manufactured in our own shops, the Detroit Electric full floating rear axle is equipped with the worm bevel type driving gears. The front axle is a drop forging of the I-beam type.

**Wheel Base** The long wheel base, 100 inches, combined with the long, resilient springs, assures splendid riding qualities.

**Operating Levers** This car can be operated from either front or rear seat, two independent sets of parallel control levers being provided. In order to have one set of control levers in operating position, the other set must be folded flat against the side of the car and locked in that position. Thus the possibility of tampering with the set not in use is prevented.

**Brakes** Two separate sets of brakes are provided, operating independently. The brakes on the rear hubs are of the internal expanding type, 16 x 2½ inches, and are operated by foot pedal. To the left of the brake foot pedal is a small pedal, pressure on which locks the hub brakes and automatically cuts off the power. The second brake operates on the motor and is applied by a slight backward movement of the controller lever.

**Tread** 56 inches (Standard).

**Battery** Our guaranteed battery—42 cells, 15 plate, used in this car is of our own exclusive design and insures the greatest capacity per unit of weight.

**Fenders** Fenders are of the oval crown design, and are skirted to the body so as to completely protect it against splash and mud.

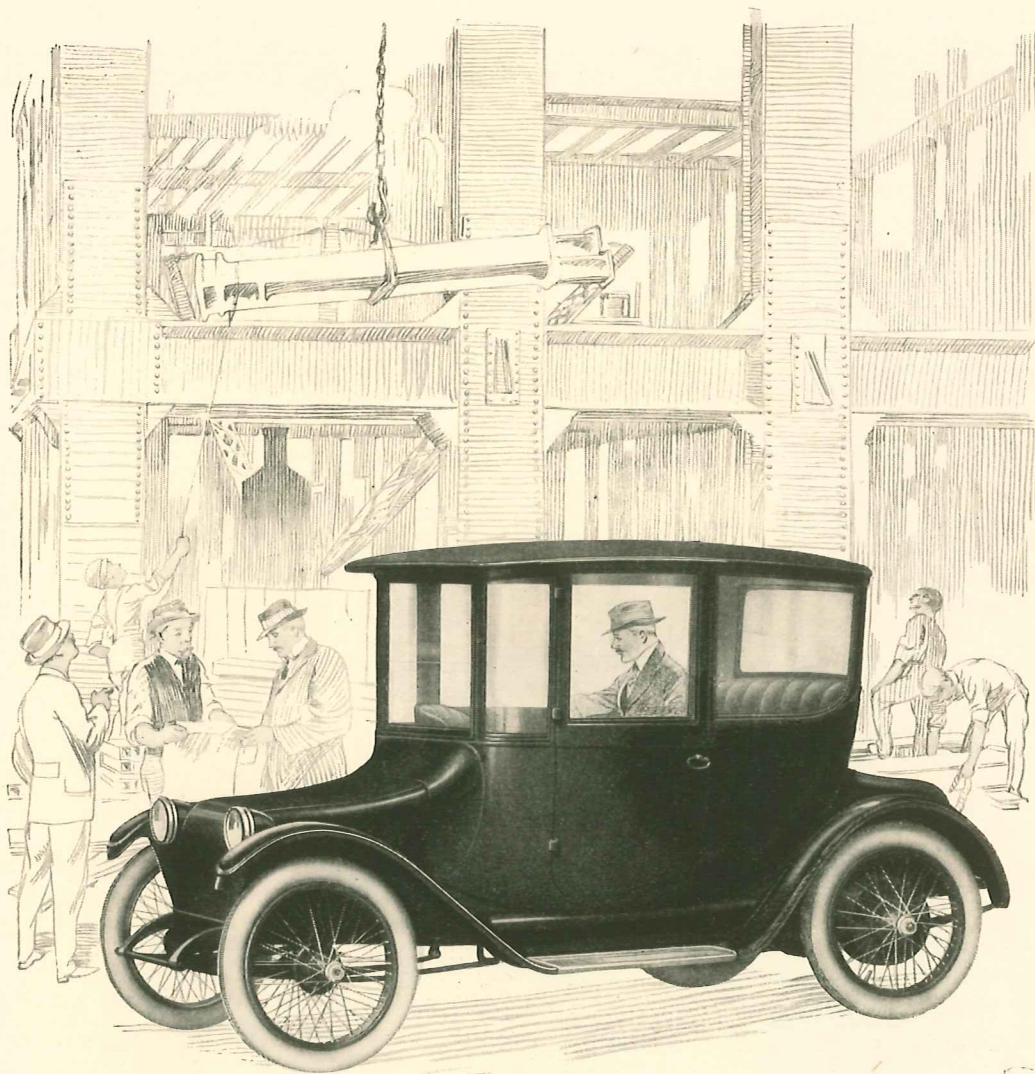
**Speeds** Five speeds are at your command, ranging from 6 to 23 miles per hour.

**Mileage** Owing to the large battery capacity and high mechanical efficiency of the Detroit Electric, extra long mileage is assured. You can be sure that your car will go as far on one charge as your daily requirements demand. Mileage per charge conservatively ranges from 65 to 100 miles.

**Equipment** The equipment consists of headlights, body lamps, two sunburst interior lights, tail lamp, Klaxette horn, meter, hub odometer, eight-day clock, Hanlon patented rain-vision front window, toilet set, and complete equipment of tools.

*Houk wire wheels are standard equipment on all models.*





*Four-Passenger Brougham Model 68*

This model 68 is an addition to The Detroit Electric line for 1917. It is slightly smaller in body size and less in weight, although its wheelbase, speed and mileage capacity are the same as our other models. It is particularly adaptable to the professional or business man as well as being the ideal car for the family.

*For price see schedule inserted at back of catalogue.*



## 1917 Specifications

# Four-Passenger Brougham Model 68

Rear Drive

**Body Features** In summer weather, windows may be lowered, affording all the pleasures of an open car, yet because of the permanent top, occupants are protected from hot rays of the sun. In cold or inclement weather, windows may be raised, affording complete protection against rain, snow or wind. Door windows are sashless and may be raised or lowered by patent window lifter. Rain drip protectors over the tops of the doors are provided.

**Interior Arrangements** Three persons may ride comfortably on the rear seat, while a fourth passenger may occupy the revolving chair in the front right corner. An upholstered package box is placed in the left front corner which may also be used as a passenger seat.

**Dimensions** Rear seat—width 49 inches, depth 18 inches. Front to rear window, 63½ inches. Top of cushion to roof, 40 inches. Door opening, 24 inches. Measurements over all—height 82 inches, width 67 inches, total length 144 inches.

**Upholstery** This model is beautifully upholstered in exclusive whip cords. Turkish type of upholstery is used throughout. Cushions are deep and comfortable and are padded with genuine curled hair.

**Painting** Cobalt blue with white stripe; wheels are painted in white, cream, red or blue as specified.

**Tires** Tires are of Goodrich Silvertown cord pneumatic type. Size 33 x 4½ inches.

**Axles** Designed and manufactured in our own shops, the Detroit Electric semi-floating rear axle is equipped with the worm bevel type of driving gears. The front axle is a drop forging of the I-beam type.

**Wheel Base** The 100-inch wheelbase, combined with the long resilient springs, assures splendid riding qualities.

**Operating Levers** Operating levers are mounted at the side of the rear seat, in parallel position, one above the other. The longer (steering) lever is operated by the right hand, and the shorter (controller) lever by the left. When the driver leaves the car, these levers may be turned up out of the way and locked, preventing theft of car.

**Brakes** Two separate sets of brakes are provided, operating independently. The brakes on the rear hubs are of the internal expanding type, 16 x 2½ inches, and are operated by foot pedal. To the left of the brake foot pedal is a small pedal, pressure on which locks the hub brakes and automatically cuts off the power. The second brake operates on the motor and is applied by a slight backward movement of the controller lever.

**Tread** 56 inches (Standard).

**Battery** Our guaranteed battery—42 cells, 13 plate, used in this car, is of our own exclusive design and insures the greatest capacity per unit of weight.

**Fenders** Fenders are of the oval crown design, and are skirted to the body so as to completely protect it against splash or mud.

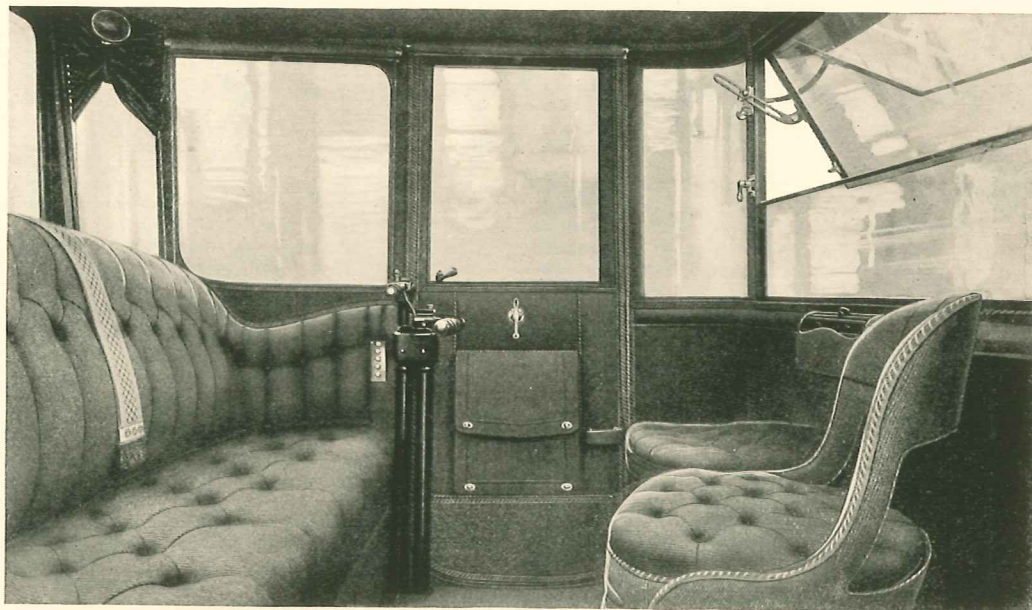
**Speeds** Five speeds are at your command, ranging as follows: 6, 9, 13, 18 and 23 miles per hour.

**Mileage** The large battery capacity and high mechanical efficiency of the Detroit Electric insure extra long mileage. You can be sure that your car will go as far on one charge as your daily requirements demand. Mileage per charge conservatively ranges from 65 to 100 miles.

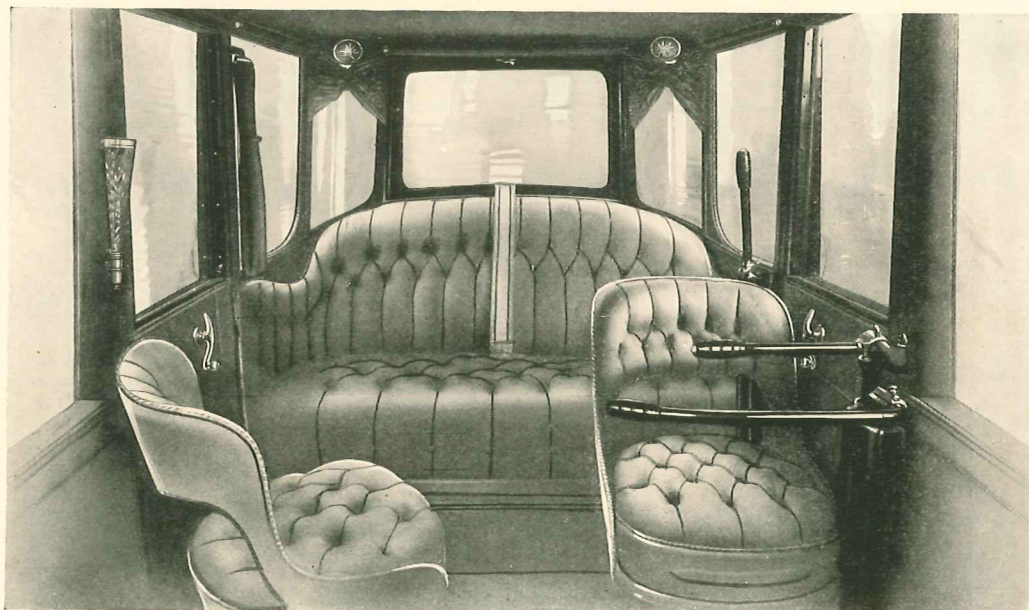
**Equipment** The equipment consists of two head lamps, dome light, tail lamp, Klaxette horn, meter, hub odometer, and complete equipment of tools.

Model 68 is equipped with Houk wire wheels only.



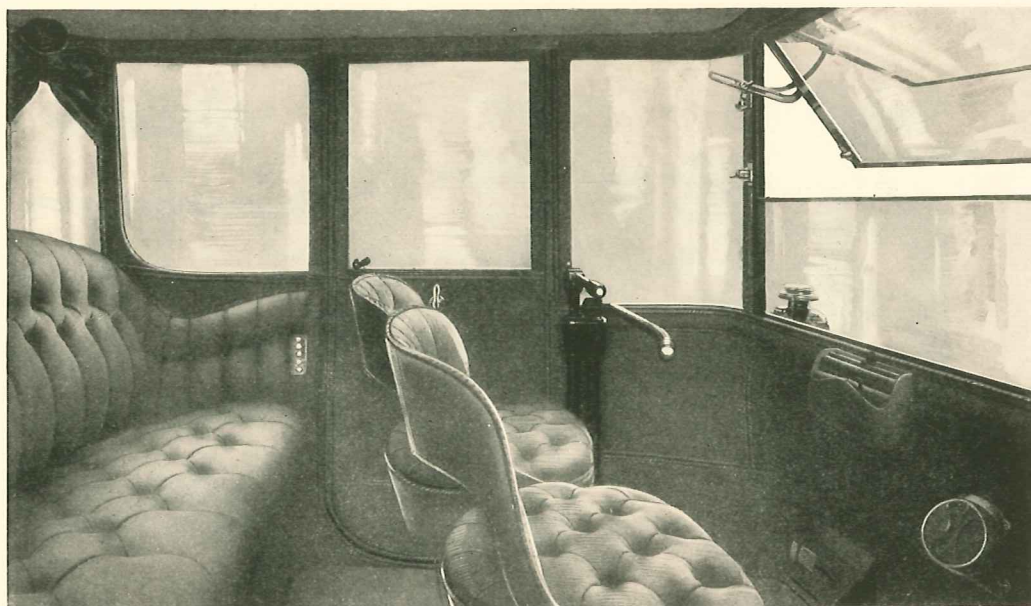


The roominess and comfort of Detroit Electric body design is well illustrated in this interior view of model 63. The revolving Pullman chair and the auxiliary seat in the left front corner increases the seating capacity to five people. Beneath the auxiliary seat is a package box. There is a large pocket on the doors for smaller parcels and the lighting switches are most conveniently placed. The sashless door windows may be raised or lowered by merely turning the knob in center of door.

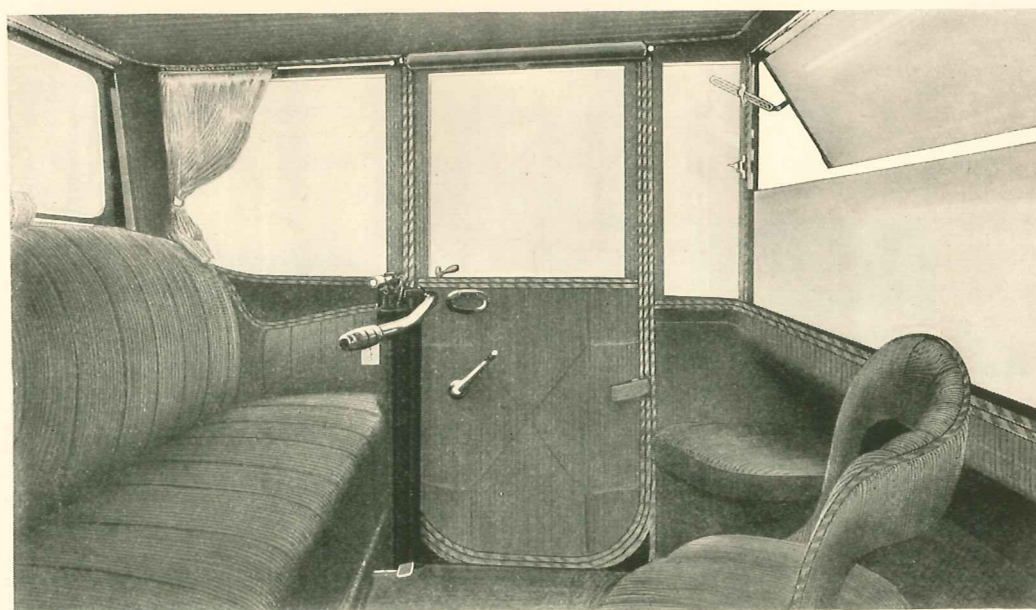


This interior view of Model 66 Duplex drive illustrates that when one set of driving levers are in operating position, the other set must be folded against side of car. In style and detail of finish, the upholstery is similar to Model 63.



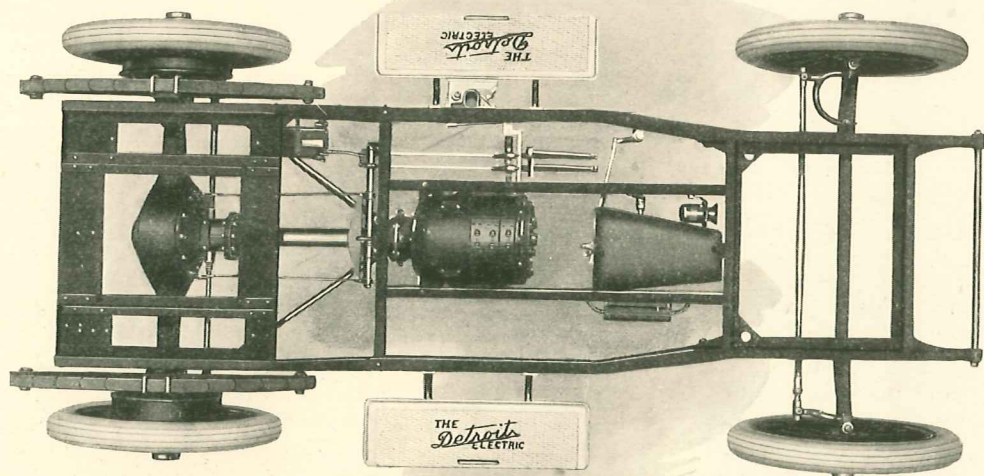


In body design, equipment and passenger capacity, this Model 64 is similar to Model 66. The Model 64, however, is driven exclusively from the front Pullman chair. The seating arrangement permits any passenger to enter or leave the car without disturbing others.

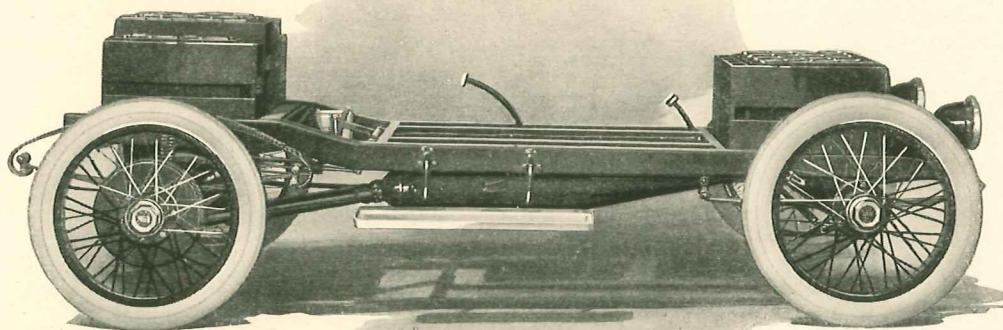


Although slightly smaller in interior dimensions the Model 68 possesses the refinement of detail so characteristic of Detroit Electric cars. Three people may be comfortably seated on the rear seat while another is provided for by the revolving chair in front right corner. In left front corner an upholstered package compartment is adjusted. This is an exclusive Detroit Electric car feature, which has proven to be most desirable when shopping or when carrying parcels about town.





In mechanical design and substantiality, the Detroit Electric chassis has attained a high degree of perfection as is indicated by the strong, simple lines in this chassis view.



This side view of chassis clearly illustrates the even distribution of weight so necessary in automobile construction to insure easy riding qualities and even stress on all parts of the car.





## *Mechanical Description*

MODELS 62, 63, 64, 65, 66

### *Control System*

The control system is the same as in the 1916 models. Safety of the driver and occupants in all models is absolutely assured through the efficient automatic safety devices provided.

When the car is at full speed it may be instantly stopped by pressure on a small foot pedal. This operation simultaneously cuts off the flow of current and applies both hub brakes regardless of the position of the controller lever. It is impossible to start the car again until the controller lever has been returned to its neutral position.

As in the past, we shall continue to use the drum type controller. This system, operating in connection with our high capacity motor, has unquestionably proven superior to all others in low power consumption, quick getaway and hill-climbing. An important feature of the controller is a self-lubricating device which assures continuous lubrication of drum segments and therefore aids easy operation.

### *Battery*

The Detroit Electric battery equipment for 1917 is of the "non-wash" type and affords greater capacity in proportion to the weight of the car than is found in any other electric. This battery is of our own exclusive design and is guaranteed for at least 8000 miles or two years' time in accordance with our written battery guarantee.

### *Accessibility*

Accessibility of all parts is one of the noteworthy features of all 1917 Detroit Electric models. Important parts requiring adjustment or lubrication from time to time are located very accessibly. The metal compartment in which the controller, motor brake, Klaxette horn and certain important electrical connections are located, will be connected just ahead of the motor as formerly and is easily reached through a door in the floor. The motor is so constructed and located that for ordinary care and inspection it can be easily reached.

### *Lubrication*

The lubrication of the car is greatly simplified by the use of self-lubricating bronze bushings wherever possible. The number of places requiring grease or oil is reduced to a minimum and all are accessible from the outside of the car, so that there is no necessity for getting underneath the car to oil the various parts. There are but few changes in mechanical features in the 1917 Detroit Electric; such changes consisting in minor improvements in design or grade of materials used which tend toward lightness and still strengthen the parts affected. As in the past only the finest grade of metals are used. Some of the alloys formerly specified have been improved after careful laboratory and practical tests, so that they better serve the special work for which they are intended.

Great improvements have been made in manufacturing methods and the accuracy resulting insures perfect interchangeability of parts as well as accurate adjustment of parts in final assembly.



### *Frame*

The distance between side members of frame is sufficient to afford the greatest support for the body, as well as to give large space under battery hoods. This enables us to place our complete equipment of batteries in the most accessible position. Every cell and connection may be reached with ease. Short turning radius of the car has been secured by narrowing the frame in front.

### *Springs*

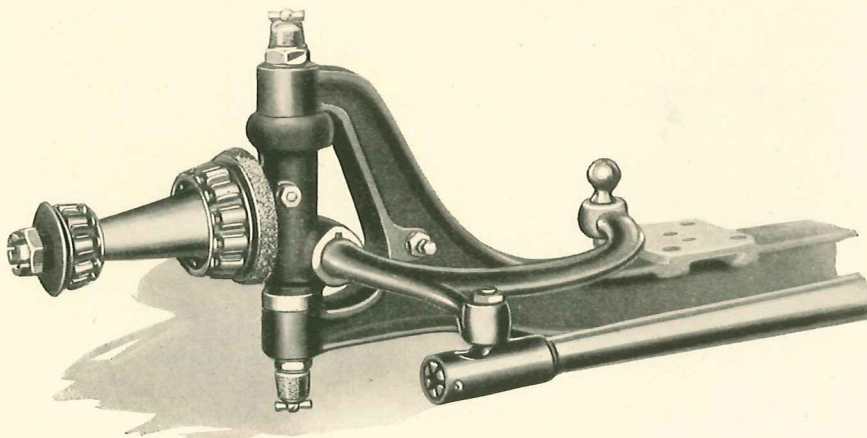
The springs used in our 1917 models have been improved; they are of the highest grade alloy steel, specially heat-treated to secure the greatest strength and flexibility and will not permit excessive side sway or rebound when traveling on rough roads.

### *A Manufactured Car*

The Detroit Electric chassis is not an assemblage of various parts purchased from parts manufacturers. All mechanical and electrical parts, as well as the bodies, are of our own design, made in our own shops. Only materials of the highest grade are used. Bearings of the finest quality throughout the chassis insure safety and long life. The use of bushings, which take the wear and can be readily and quickly replaced, further lengthens the life of the car.

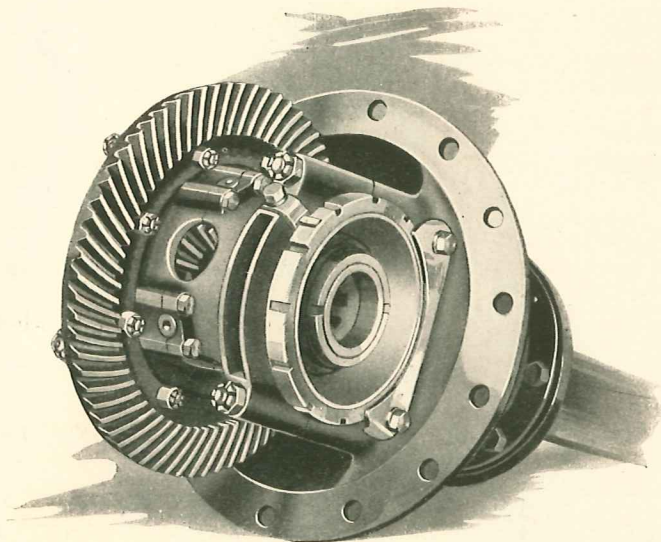
Throughout the chassis, drop forgings and steel pressings are used wherever possible. Clean lines, great strength and simplicity characterize the completed Detroit Electric chassis.

In detail of design the new Model 68 is slightly different from the other models outlined. Its frame is straight side instead of the drop type; wheels are smaller and other parts of chassis and body are somewhat smaller and lighter; the same high grade materials are used throughout and the same expert workmanship is in evidence which is always characteristic of Detroit Electric Cars.

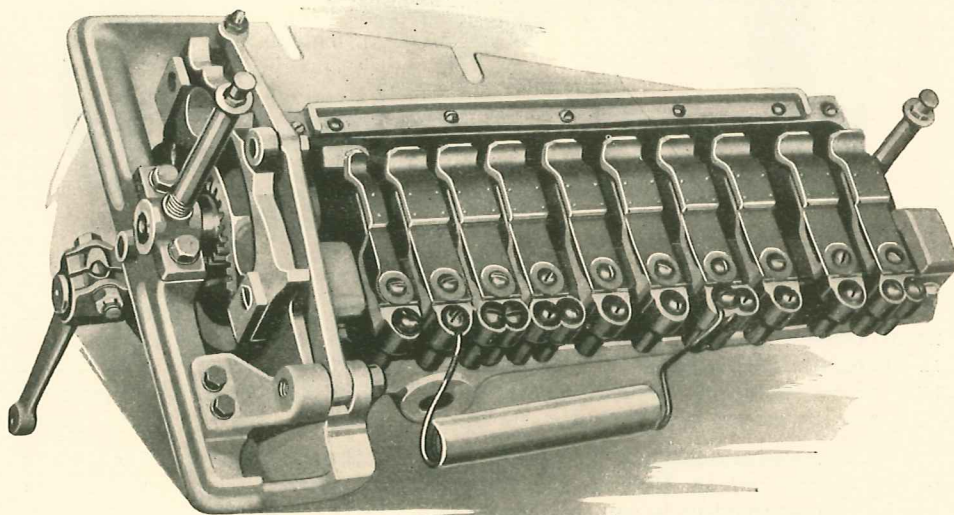


The Front Axle is an I-Beam drop forging; the spindles, steering knuckles and ball ends being of special alloy steel, heat-treated. Knuckles turn in ball bearings and are fitted with self-lubricating bushings, insuring easy steering.



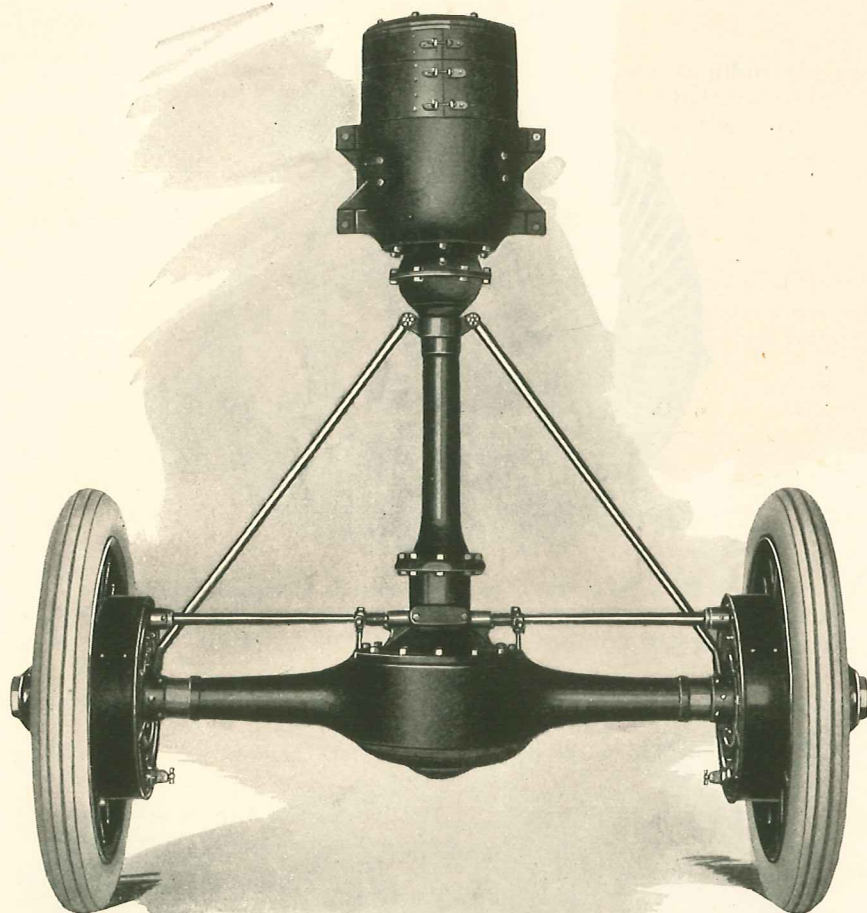


The Worm Bevel type of gear is standard in all models. This type of construction insures silence, smooth running and high efficiency.



Particular attention is called to the perfected design of the Detroit Electric Controller. The drum segments are self-lubricating. The drum rotation is governed by a star-wheel so positive in action that contact fingers automatically make perfect connection with drum segments as speed of car is advanced by driver. The entire mechanism of the controller is encased in a dust-proof aluminum housing.





The well merited general approval of the Detroit Electric "Chainless" Direct Shaft Drive has been strengthened by many years' service in users' hands. It has been actually proven by practical test over a long period of time that this type of construction delivers to the rear wheels the highest possible percentage of power developed by the motor.

The fundamental design of this construction is the same today as when it was first incorporated in Detroit Electric cars. However, close observation and study have enabled us to improve some parts which will result in making the 1917 unit more perfect in minor details.

The connection between motor and rear driving gears is direct without chain or gear reduction. The propeller shaft and pinion gear are of chrome nickel and vanadium steel and are entirely enclosed in a pressed tubular housing of clean cut design. Motor and shafts all travel on ball bearings of liberal size, reducing friction to the lowest possible limit.





# *Standard Warranty*

APPROVED BY

*National Automobile Chamber of Commerce, Inc.*

ADOPTED BY

*Anderson Electric Car Co., Detroit, Mich.*

This is to certify that each new Detroit Electric manufactured by us is warranted to be free from defects in material and workmanship under normal use and service, our obligation under this warranty being limited to making good at our factory any part, or parts, thereof which shall within 90 days after delivery of such vehicle to the original purchaser be returned to us with transportation charges prepaid and which our examination shall disclose to our satisfaction to have been thus defective; this warranty being expressly in lieu of all other warranties expressed or implied and of all other obligations or liabilities on our part, and we neither assume nor authorize any other person to assume for us any other liability in connection with the sale of our vehicles.

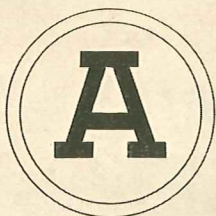
This warranty shall not apply to any vehicle which shall have been repaired or altered outside of our factory in any way so as, in our judgment, to affect its stability or reliability, nor which has been subject to misuse, negligence or accident.

We make no warranty whatsoever in respect to tires inasmuch as they are usually warranted expressly by their respective manufacturers. The battery in this vehicle is covered by a special agreement which is to be duly signed by ourselves and our customer.

The purchaser expressly agrees that our liability is limited to the above warranty and does not include damages to either property or person of self or others.



175  
100



1526



1527



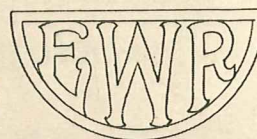
1528



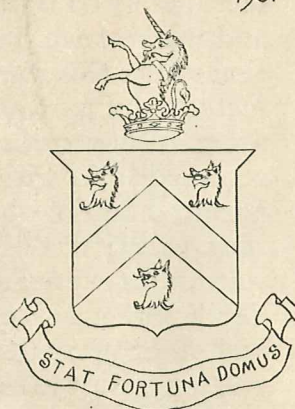
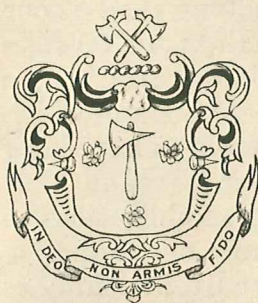
1529



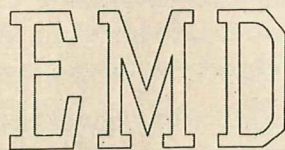
1530



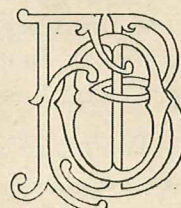
1531



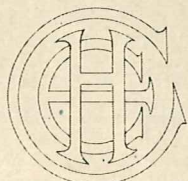
1532



1533



1534



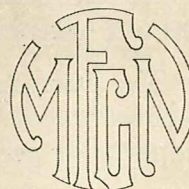
1535



1536



1538



1537

All monograms finished in gold unless colors are specified, except Nos. 1527 and 1530, which are outlined in gold and filled in to harmonize with colors or striping on body.



